

NOTES: UNLESS OTHERWISE SPECIFIED

1. CONSTRUCTION:
HOUSING: MOLDED NYLON. AVAILABLE IN BLACK.
2. PERFORMANCE:
MAXIMUM CURRENT: XX
MAXIMUM VOLTAGE: XX
MAXIMUM TEMPERATURE: XX
3. FEATURES:
BUILT IN STRAIN RELIEF.

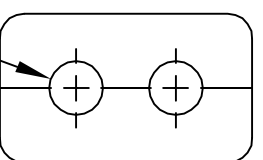
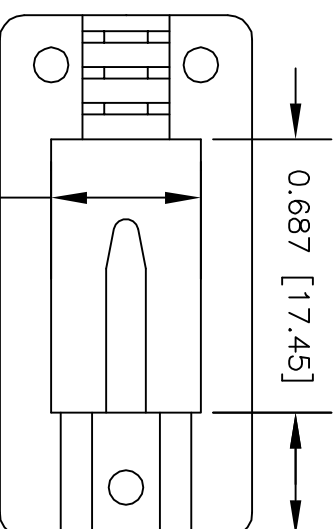
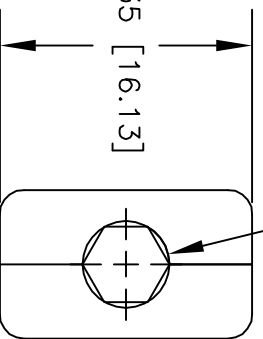
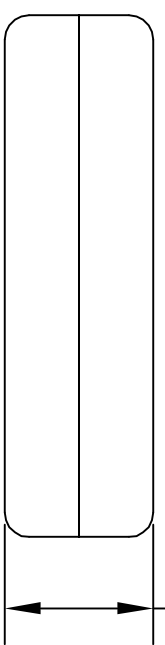
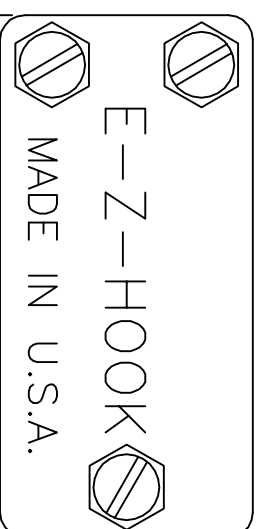
LTR

DESCRIPTION

REVISIONS

DATE

APPROVED



ACTUAL SIZE

UNLESS OTHERWISE SPECIFIED DIMENSIONS ARE IN INCHES TOLERANCES ARE: FRACTIONS DECIMALS ANGLES		CONTRACT NO.	
±	.XX ±	DRAWN	APPROVALS
	.XXX ±	R.L.	DATE
MATERIAL SEE NOTE.		APPROVED BY	
FINISH SEE NOTE.			
USED ON			
APPLICATION		DO NOT SCALE DRAWING	
NEXT ASSY			
DESCRIPTION		E-Z-HOOK DIVISION OF TEKTEST INC. ARCADIA, CA 91006 U.S.A.	
IN-LINE Y BLOCK FOR STANDARD SIZE CABLES			
SIZE	CODE IDENT NO.	DRAWING NO.	REV.
A	08505	Y1000-2	
SCALE	SHEET 1 OF 1		
2:1			

THE INFORMATION CONTAINED IN THIS DOCUMENT IS PROPRIETARY TO E-Z-HOOK. THE INFORMATION IS NOT TO BE REPRODUCED WITHOUT PRIOR WRITTEN PERMISSION OF E-Z-HOOK. DIV. OF TEKTEST INC. MAXIMUM TESTED RATINGS IN A HANDS-FREE CONTROLLED ENVIRONMENT. MAXIMUM RATINGS ARE NOT TO BE USED CONCURRENTLY.