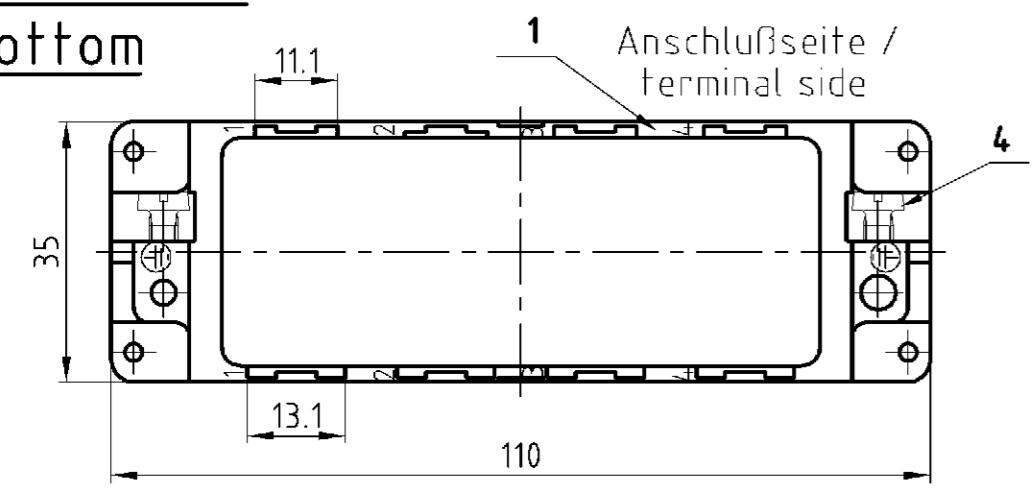
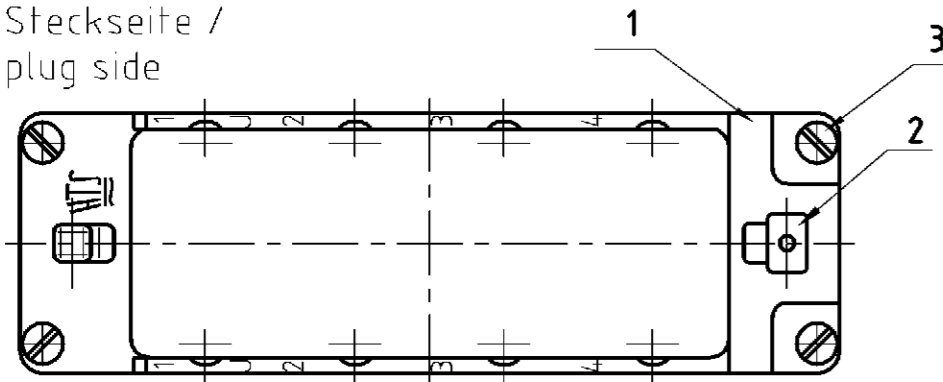


LOC	DIST	REVISIONS				DATE	DWN	APVD
AI	-	P	LTR					
PROJEKT NR.: B 91 04 65		B2	ECR-05-006046		01.07.06	GW	ST	

**Unterteil /  
bottom**

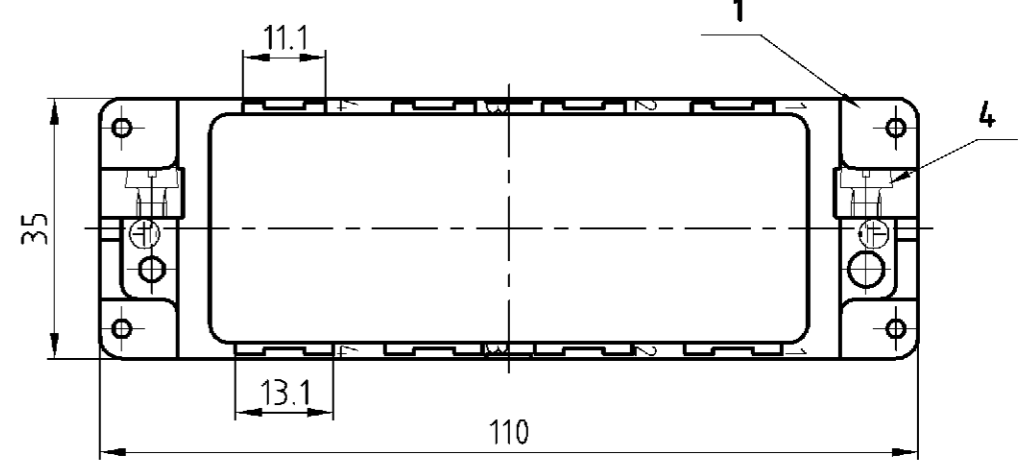


**Steckseite /  
plug side**

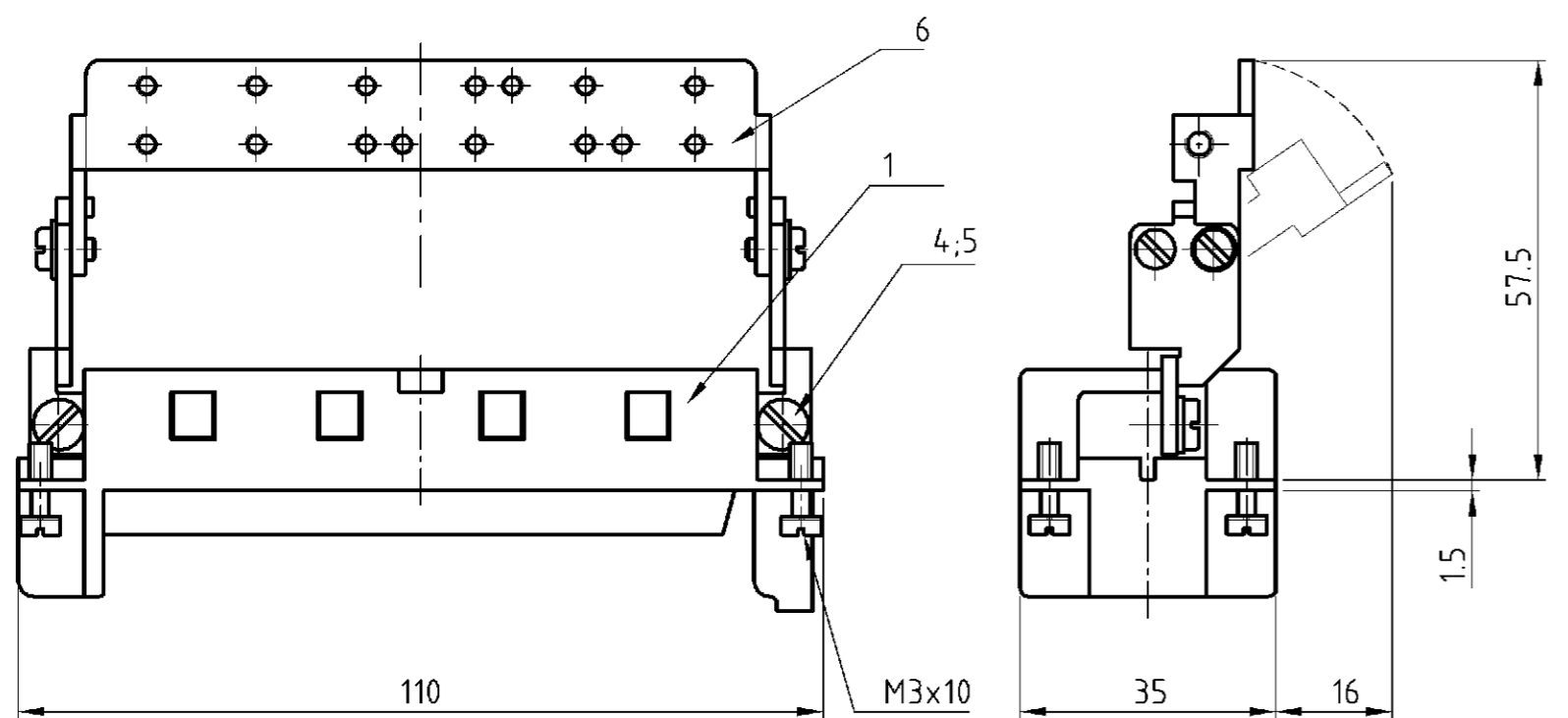
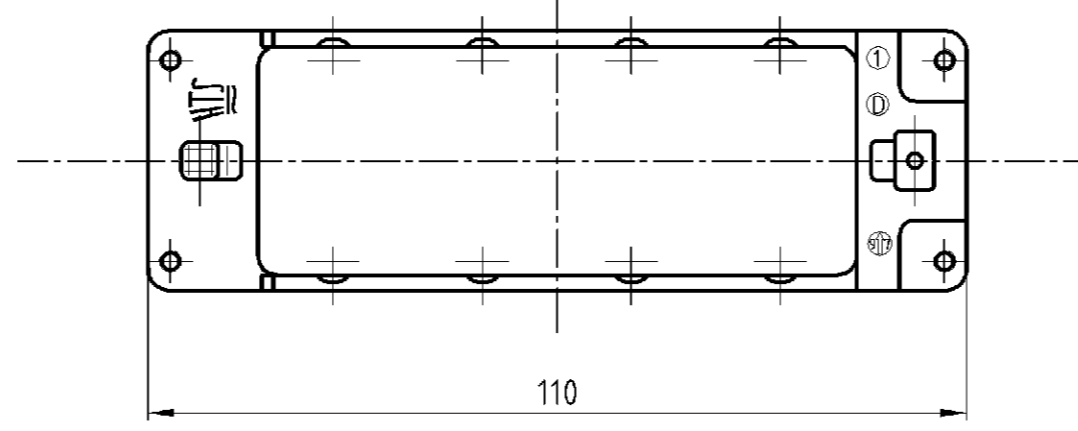
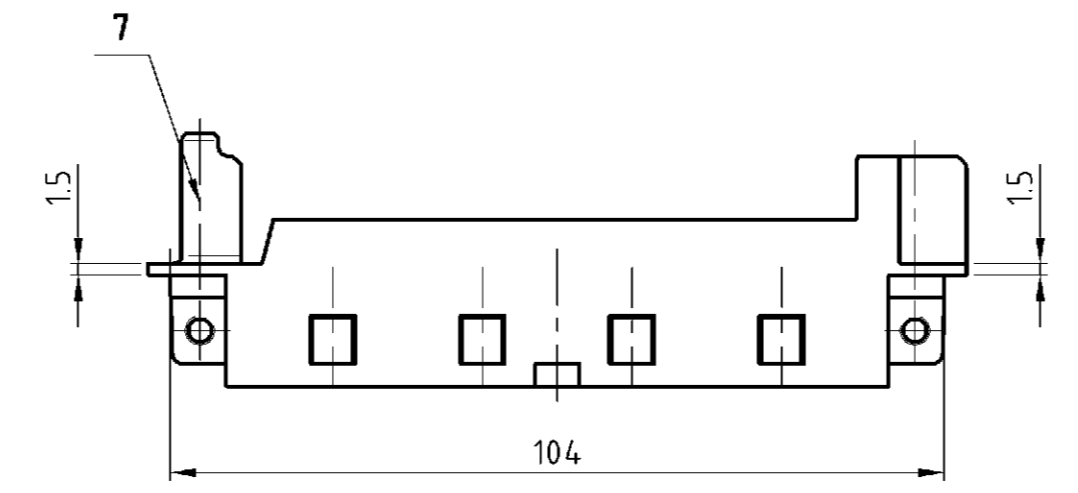
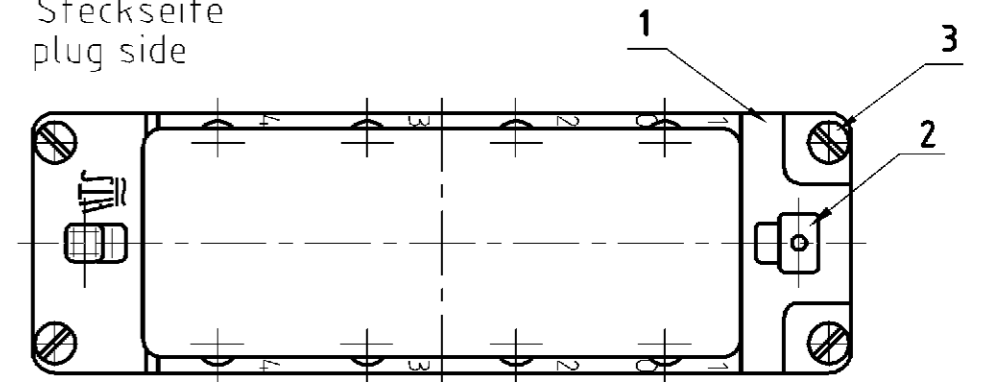


**Oberteil /  
upper part**

Anschlußseite  
terminal side



**Steckseite  
plug side**



						1	2			
		1				Modulrahmen Oberteil module frame upper part	Zink-Leg./ zinc alloy	Verzinkt/ tin plated	7	Sonder für Griffblech/ special for grip
		1	1			Schirmbügel schwenkbar/ screen termination roofing	Stahl/steel	Verzinkt/ tin plated	6	
		2	2			Federring/ spring lock washer	Stahl/steel	Verzinkt/ tin plated	5	DIN 128 - A4
2	2	2	2	2	2	Zylinderschraube mit Schlitz/ cylinder screw with slit	Messing/brass	Vernickelt/ nickel plated	4	DIN EN ISO 1207
4	4	4	4	4	4	Befestigungsschraube/ fixing screw	Stahl/steel	Vernickelt/ nickel plated	3	M3x10
1	1	1	1	1	1	Erdkontaktfeder/ spring f. grounding cont.	Bronze/ bronze	Vernickelt/ nickel plated	2	
1	1		1	1	1	Modulrahmen/ module frame	Zink-Leg./ zinc alloy	Verzinkt/ tin plated	1	
0-70-60-50-40-30-20-1						DESCRIPTION / BENENNUNG	MATERIAL	SURFACE/COLOR	ITEM NO. Pos.	NOTES / BEMERKUNGEN
MDL2-GR-U-8-B5-8	MDL2-GR-O-8-B5-8	MDL2-GR-O-8/GB-B1-4	MDL2-GR-U-8/SB-B1-4	MDL2-GR-O-8/SB-B1-4	MDL2-GR-U-8-B1-4	MDL2-GR-O-8-B1-4	ORDERING TEXT/BESTELTEXT	DWN wroblewski 06.10.2003	APVD Baum 06.10.2003	NAME <b>AMP</b> HTS Elektrotechnik 53819 Neunkirchen, Germany
DIMENSIONS: DIMENSIONEN: mm							TOLERANCES UNLESS OTHERWISE SPECIFIED ALLGEMEIN TOLERANZEN		PRODUCT SPEC PRODUKTSPEZ	
MATERIAL							FINISH / OBERFLÄCHE / FARBE		APPLICATION SPEC VERARBEITUNGSSPEZ	
0 PLC							0 PL		WEIGHT GEWICHT	
1 PLC							1 PL		CUSTOMER DRAWING	
2 PLC							2 PL		SIZE	
3 PLC							3 PL		CAGE CODE	
ANGLES / WINKEL							FINISH / OBERFLÄCHE / FARBE		DRAWING NO. ZEICHNUNGS-NR.	
1							2		1108780	
							RESTRICTED TO NUR FUER		REVISIONS	
									DATE	
									DWN	
									APVD	
									REV	
									ST	