

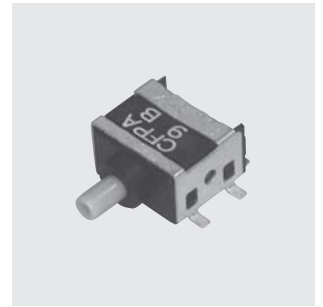
CFPA

Washable



RoHS Compliant

Surface Mount Pushbutton Switches



■ Features

1. Compatible with Reflow Soldering
2. Washable
3. Gold-Plated Contacts for Low Current Application
4. Clip Contact Mechanism for High Contact Reliability

■ Specifications

Rating	Max.	0.4VA (28VDC max.) (Resistive load)
	Min.	1 μ A 20mDCV (Resistive load)
Initial contact resistance	80m Ω max. (1.5mA 1kHz 20mV min.)	
Dielectric strength	500VAC 1 minute	
Initial insulation resistance	500M Ω min. (500VDC)	
Stroke	1.1 mm	
Operating force	1.5N \pm 1N	
Electrical life	50,000 operations at max. rating	
Switch timing	Non-shorting	
Operating temperature range	-40 $^{\circ}$ C ~ +85 $^{\circ}$ C	
Storage temperature range	-40 $^{\circ}$ C ~ +85 $^{\circ}$ C	

■ Part Numbering

CFPA — **1** **F** **B4** — **A** **2** **T**

Series code & Acuator

Code	Type
P	Pushbutton

Number of poles

Fig.	Number of poles
1	1 pole

Switching function

Code	Switching function
F	ON — (ON)

Terminal style

Fig.	Terminal style
B4	Gull wing R/A

Actuator shape

Code	Actuator shape
A	Standard

Contact material

Fig.	Contact material
2	Gold plated

Packaging specifications

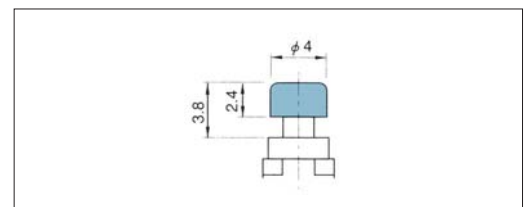
Code	Packaging specifications
T	Taping
W	Tray

■ Optional Accessories

《Sold separately》

Part Name	Dimensions	Color	Part Number
Coor Cap	<p>Gloss finish</p> <p>ABS resin</p>	White	140000481453
		Red	140000481452
		Black	140000481451
		Gray	140000481450

■ Color Cap Mounting



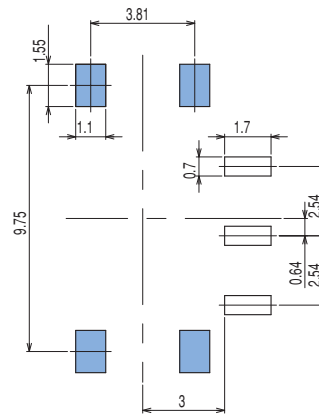
The color cap should be installed after the reflow soldering and washing process.

■ Switching function

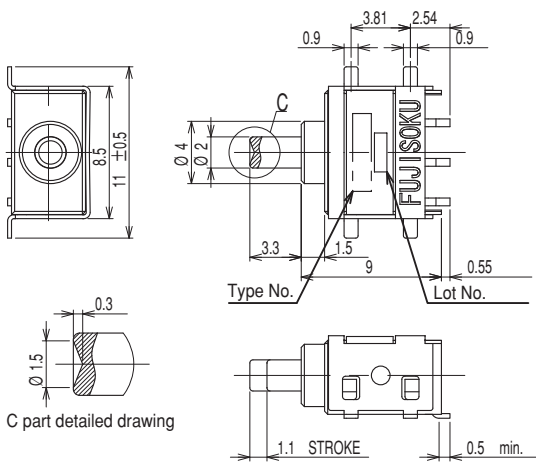
	Switching function		
Part No.	CFPA-1FB4-A2	ON	(ON)
Connecting terminals		2-3	2-1

■ : Packing specifications T or W (ON) : Momentary

■ Pad Layouts



■ Dimension



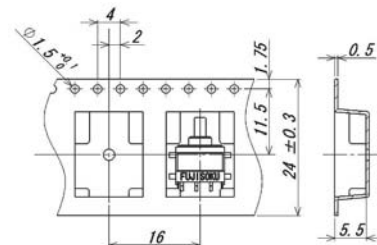
■ Table of Part Numbers

Packaging specifications	Part No.
Taping	CFPA-1FB4-A2T
Tray	CFPA-1FB4-A2W

■ Packaging Specifications

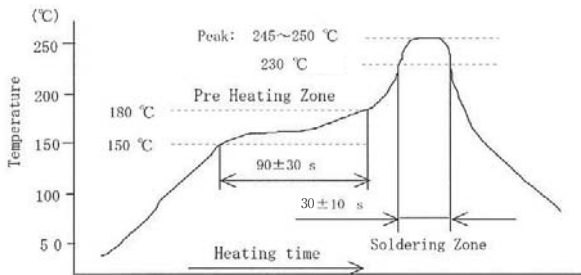
Taping

500 pcs/reel



■ Soldering Specifications

(1) Reflow Soldering



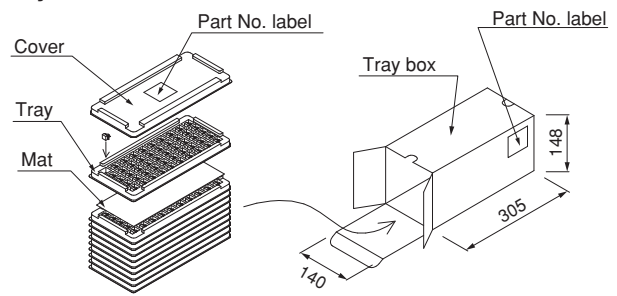
Apply reflow soldering: 2 times max.

(2) Manual Soldering

Device : Soldering iron
350°C, Max.; 3-4 seconds, Max.

Tray

50 pcs/tray



■ Flux Cleaning

- (1) For the solvent, use water or alcohol. In addition, pay careful attention to use the solvent.
- (2) The cleaning method is limited to immersion cleaning only. The cleaning time is 2 minutes, max, but be sure to minimize the time as much as possible.
- (3) To clean the switch after soldering, wait until the switch temperature has cooled down to room temperature (30°C or below).
- (4) The product must be dried sufficiently after cleaning. Improper drying may result in fluctuation in torque or electrical damage.