

## SINGLE BAND GLASS MOUNT

GPS glass mount single band antennas have the following specifications:

<b>Frequency:</b>	<b>1575.4 MHz</b>	<b>Gain:</b>	<b>1.5 dBi</b>
<b>Pattern:</b>	<b>Herispherical</b>	<b>LNA Gain:</b>	<b>26 dB ± 2 dB</b>
<b>Polarization:</b>	<b>Right-Hand Circular</b>	<b>VSWR:</b>	<b>1.5:1</b>
<b>Mounting:</b>	<b>Double Sided Tape</b>	<b>Voltage:</b>	<b>3 or 5 V DC</b>

Model	Size		Color	Cable	Connector
	H x L x W (In)				
GPSGMSMA	.2 x 3 x 1.2		Black	16.4' RG-174	SMA
GPSGMSMB	.2 x 3 x 1.2		Black	16.4' RG-174	SMB



## MULTI BAND GLASS MOUNT

GPS glass mount multi band antennas have the following specifications:

<b>Frequency:</b>	<b>824-960 / 1710-2170 / 1575.4 MHz</b>	<b>Gain:</b>	<b>2/4 dBi</b>
<b>Pattern:</b>	<b>Herispherical</b>	<b>LNA Gain:</b>	<b>26 dB ± 2 dB</b>
<b>Polarization:</b>	<b>Linear Verical/Omni</b>	<b>VSWR:</b>	<b>2.5:1/1.5:1</b>
<b>Mounting:</b>	<b>Double Sided Tape</b>	<b>Voltage:</b>	<b>3 or 5 V DC</b>

Model	Size		Color	Cable	Connector
	H x L x W (In)				
GPSGM800/2170FS	.3 x 2 x 4		Black	16.4' RG-174	FME/SMA



## GPS LOW PROFILE SINGLE BAND

GPS low profile single band antennas have the following specifications:

<b>Frequency:</b>	<b>1575.4 MHz</b>	<b>Gain:</b>	<b>5 dBic</b>
<b>Pattern:</b>	<b>Herispherical</b>	<b>LNA Gain:</b>	<b>28 dB ± 2 dB</b>
<b>Polarization:</b>	<b>Right-Hand Circular</b>	<b>VSWR:</b>	<b>2.0:1</b>
<b>Mounting:</b>	<b>NMO Mount</b>	<b>Voltage:</b>	<b>5 V DC</b>

Model	Size		Cable	Connector
	H x D (In)	Color		
GPSNMO01	1.3 x 2.9	White	Order Separately	Order Separately
GPSNMO02	1.3 x 2.9	Black	Order Separately	Order Separately
GPSNMO07	1.3 x 2.9	White	17' RG-58/U	SMB
GPSNMO08	1.3 x 2.9	Black	17' RG-58/U	SMB
GPSNMO09	1.3 x 2.9	White	17' RG-58/U	SMA
GPSNMO10	1.3 x 2.9	Black	17' RG-58/U	SMA



The most commonly used cable assembly/mount is the NMOHFUD (27 MHz to 6 GHz) with 17' of UD (RG-58/U Dual Shield).

1 800 ANTENNA (268-3662)

NOTE: Antennas are not to scale

GPSDM



## GPS SINGLE BAND DIRECT MOUNTS

*GPS single band direct mount antennas have the following specifications:*

<b>Frequency:</b>	<b>1575.4</b>	<b>Polarization:</b>	<b>Right-Hand Circular</b>
<b>Gain:</b>	<b>5 dBic</b>	<b>Coax:</b>	<b>17' RG-174</b>
<b>LNA Gain:</b>	<b>28 dB ± 2 dB</b>	<b>Voltage:</b>	<b>5 V DC</b>
<b>Pattern:</b>	<b>Hemispherical</b>	<b>Color:</b>	<b>Black</b>
<b>Mounting:</b>	<b>Direct Feed 5/8" hole</b>	<b>Size:</b>	<b>.07" H x 2.5" Dia</b>

Model	Connector
GPSDM02	MCX
GPSDM04	MMCX
GPSDM06	SMB
GPSDM08	SMA

## GPS COMBI WHIP DIRECT MOUNTS

*GPS combi whip direct mount antennas have the following specifications:*

<b>LNA Gain:</b>	<b>26 dB ± 2 dB</b>	<b>Pattern:</b>	<b>Hemispherical / Omni</b>
<b>Polarization:</b>	<b>Right-Hand Circular /Vertical</b>	<b>Coax:</b>	<b>16.4' RG-174 / 16.4' RG-174</b>
<b>Mounting:</b>	<b>Direct Feed 5/8" hole</b>	<b>Voltage:</b>	<b>5 V DC</b>
<b>Color:</b>	<b>Black</b>	<b>Base Size:</b>	<b>2" W x 2.3" L x 0.7" H</b>

GPSCW



GPSCW3E



Model	Frequency (MHz)	Gain (dBi/dBic)	Whip Length (In)	Connector
GPSCW1502	136-174 / 1575.42	2.14/5	22	SMA/SMB
GPSCW4501	406-512 / 1575.42	2.14/5	6.25	SMA/SMA
GPSCW4502	406-512 / 1575.42	2.14/5	6.25	SMA/SMB
GPSCW3E8001	806-896 / 1575.42	5/5	11.5	SMA/SMA
GPSCW3E8003	806-896 / 1575.42	5/5	11.5	FME/SMA

## GPS LTE DIRECT MOUNTS

Model	Frequency (MHz)	Gain (dBd/dBi)	Polarization	VSWR	Mounting	Voltage	Size	Cable	Conn
							H x Dia (In)		
GPSDM700/2500FFS	698-960/1710-2170/2300-2700	.9/3	Linear Vertical	2.0:1	3/4" Hole	3 or 5	3.5 x 4.16	17' RG-58	FME
	2400-2485/5150-5850	3.9/6	Linear Vertical	17' RG-58				FME	
	1575.42	5 dBic	RHCP	17' RG-174				SMA	



## GPS MULTI BAND DIRECT MOUNTS

**GPS multi band direct mount antennas have the following specifications:**

**Frequency:** 824-960 / 1710-2170 / 1575.4 MHz

**VSWR:** <2.0:1

**Gain:** 2 dBi / 2 dBi / 5 dBic

**LNA Gain:** 26 dB ± 2 dB

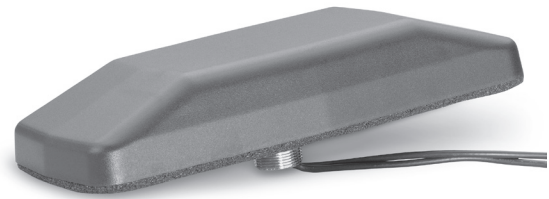
**Pattern:** Omni / Omni / Hemispherical

**Voltage:** 3 or 5 V DC

**Polarization:** Vertical / Vertical / Right-Hand Circular

**Coax:** 16.4' RG-174 / 16.4' RG-174

**Mounting:** Direct Feed 3/4" hole



Model	Size	Color	Connector
	L x W x D (In)		
GPSCP00	7.6 x 3.4 x 1.3	Black	TNC/SMA
GPSCP01	7.6 x 3.4 x 1.3	White	No Conn
GPSCP02	7.6 x 3.4 x 1.3	Black	No Conn/SMA
GPSCP03	7.6 x 3.4 x 1.3	White	No Conn/SMA
GPSCP04	7.6 x 3.4 x 1.3	Black	No Conn/SMB
GPSCP05	7.6 x 3.4 x 1.3	White	No Conn/SMB
GPSCP06	7.6 x 3.4 x 1.3	Black	SMA/SMA
GPSCO07	7.6 x 3.4 x 1.3	White	SMA/SMA
GPSCP08	7.6 x 3.4 x 1.3	Black	MPL/SMA
GPSCP09	7.6 x 3.4 x 1.3	White	MPL/SMA
GPSCP10	7.6 x 3.4 x 1.3	Black	TNC/BNC
GPSCWCP00	3.9 x 2.3 x 3.2	Black	TNC/SMA
GPSCWCP01	3.9 x 2.3 x 3.2	Black	No Conn/SMA
GPSCWCP02	3.9 x 2.3 x 3.2	Black	No Conn/SMB
GPSCWCP03	3.9 x 2.3 x 3.2	Black	SMA/MPL
GPSCWCP04	3.9 x 2.3 x 3.2	Black	SMA/SMA



1 800 ANTENNA (268-3662)

NOTE: Antennas are not to scale



## GPS LTE DIRECT MOUNTS

**NMOHFGPS mounts have the following specifications:**

<b>Frequency:</b>	1575.4 - 1576.4 MHz	<b>Gain:</b>	5 dBic
<b>Polarization:</b>	Right-Hand Circular / Vertical	<b>LNA Gain:</b>	26 dB ± 2 dB
<b>Cable:</b>	16.4' RG-174 (GPS)	<b>VSWR:</b>	Less than 2:1
	16.4' RG-58 (NMOHF)	<b>Voltage:</b>	3 or 5 V DC
<b>Size:</b>	.5 x 2 x 4.5	<b>Color:</b>	Black
<b>Mounting:</b>	5/8" Hole		

Model	Connectors
NMOHFGPSFMENOCNN	FME/No Connector
NMOHFGPSFMESMA	FME/SMA
NMOHFGPSNOCNN	No Connectors
NMOHFGPSSMASMA	SMA/SMA

**NOTE:** Specifications listed refer to GPS performance. Additional antenna specifications are dependent on the antenna mounted on the NMO side.

## SINGLE BAND MAGNETIC MOUNTS

**GPS single band magnetic mount antennas have the following specifications:**

<b>Frequency:</b>	1575.4 MHz	<b>Gain:</b>	5 dBic
<b>Pattern:</b>	Herispherical	<b>LNA Gain:</b>	26 dB ± 2 dB
<b>Polarization:</b>	Right-Hand Circular	<b>VSWR:</b>	Less than 2:1
<b>Cable:</b>	17' RG-174	<b>Voltage:</b>	5 V DC



GPS Single Band Mag Mount

Model	Size	Color	Connector
	H x L x W (In)		
GPS0002	0.5 x 1.75 x 1.5	Black	MCX
GPS0006	0.5 x 1.75 x 1.5	Black	SMB
GPS0008	0.5 x 1.75 x 1.5	Black	No Conn
GPS0010	0.5 x 1.75 x 1.5	Black	SMA
GPS0012	0.5 x 1.75 x 1.5	Black	BNC

## MULTI BAND MAGNETIC MOUNTS

**GPS Multi band magnetic mount antennas have the following specifications:**

<b>Frequency:</b>	824-960 / 1710-2170 / 1575.4 MHz
<b>Gain:</b>	2 dBi / 2 dBi / 5 dBic
<b>LNA Gain:</b>	26 dB ± 2 dB
<b>Pattern:</b>	Omni / Omni / Herispherical
<b>Polarization:</b>	Verticl / Vertical / Right-Hand Circular
<b>VSWR:</b>	Less than 2:1
<b>Cable:</b>	17' RG-174
<b>Voltage:</b>	3 or 5 V DC



GPS Multi Band Mag Mount

Model	Size	Color	Connector
	H x L x W (In)		
GPSCPMM00	1.3 x 7.6 x 3.4	Black	TNC/SMA
GPSCPMM02	1.3 x 7.6 x 3.4	Black	No Conn/SMA

## GPS MULTI BAND STEALTH BLADES

Model	Frequency (MHz)	Gain	Dimensions L x W x D (In)	Polarization	Voltage	Color	Coax	Connector
GPSSB800/2170FS	806 - 960	0 dBi	5.4 x 1.5 x .6	Linear Vert	3 or 5	Black	16.4' RG-174	FME
	1710 - 2170	0 dBi		RHCP			16.4' RG-174	SMA
	1575.4	26 (LNA)						



## GPS TIMING ANTENNA

Model	Frequency (MHz)	LNA Gain ( $\pm 2$ dB)	Dimensions H x W (In)	Polarization	Voltage (DC)	Color	Mounting	Connector
GPS0015	1575.42 $\pm$ 1.023	25	4 x 4.5	RHCP	4-15	White	Bracket	N Male

