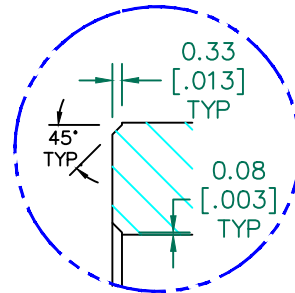


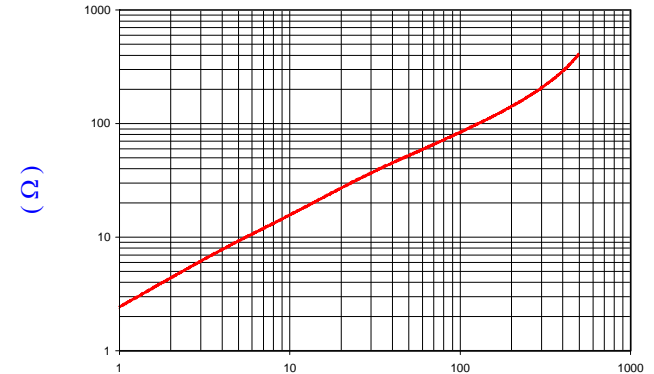
SECTION A-A



DETAIL "A"
SCALE: 4:1

IMPEDANCE (Z)			
Frequency	25 MHz	100 MHz	300 MHz
Nominal (REF)	31 Ω	79 Ω	204 Ω
Minimum	- Ω	63 Ω	- Ω

Z vs. FREQUENCY
(REF. ONLY)



AGILENT E4991A Impedance/Material Analyzer
HP 16092A Test Fixture

BARE DIMENSIONS

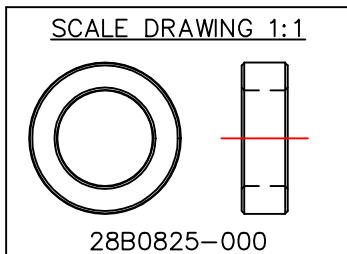
A	20.95 [.825]	±	0.40 [.016]
B	13.21 [.520]	±	0.25 [.010]
C	6.35 [.250]	±	0.18 [.007]

WEIGHT/1000 6.45 kgs 14.22 lbs

**UNCONTROLLED
DOCUMENT**

NOTES: UNLESS OTHERWISE SPECIFIED

1. COSMETIC SPECIFICATION REFER TO WI-QA-038.



DIMENSIONS ARE IN MM [INCHES].				This print is the property of Laird Tech. and is loaned in confidence subject to return upon request and with the understanding that no copies shall be made without the written consent of Laird Tech. All rights to design or invention are reserved.		Laird	
H	UPDATE THE LOGO	05/13/15	QIU	PROJECT/PART NUMBER: 28B0825-000	REV H	PART TYPE: FERRITE CORE	DRAWN BY: LNK
G	UPDATE COMPANY LOGO	03/07/08	TMB				
F	UPDATE FORMAT, ADD CURVE, REMOVE COATINGS, CHG P/N, CORRECT DETAIL A	05/28/03	JRK	DATE: 09/26/93	SCALE: 2 : 1	MATERIAL: FERRITE	
E	UPDATE PRINT CHG WGT, ADD CHAMFER DETAIL	04/02/02	JRK				
D	CHG P/N TO 28B0825-00*, ADD COATING SPECS	03/18/99	I.S.	CAD # 28B0825-000-H	TOOL # B0825		
C	UPDATED P/N FOR NEW CATALOG	12/04/95	JBE				
REV	DESCRIPTION	DATE	INT				